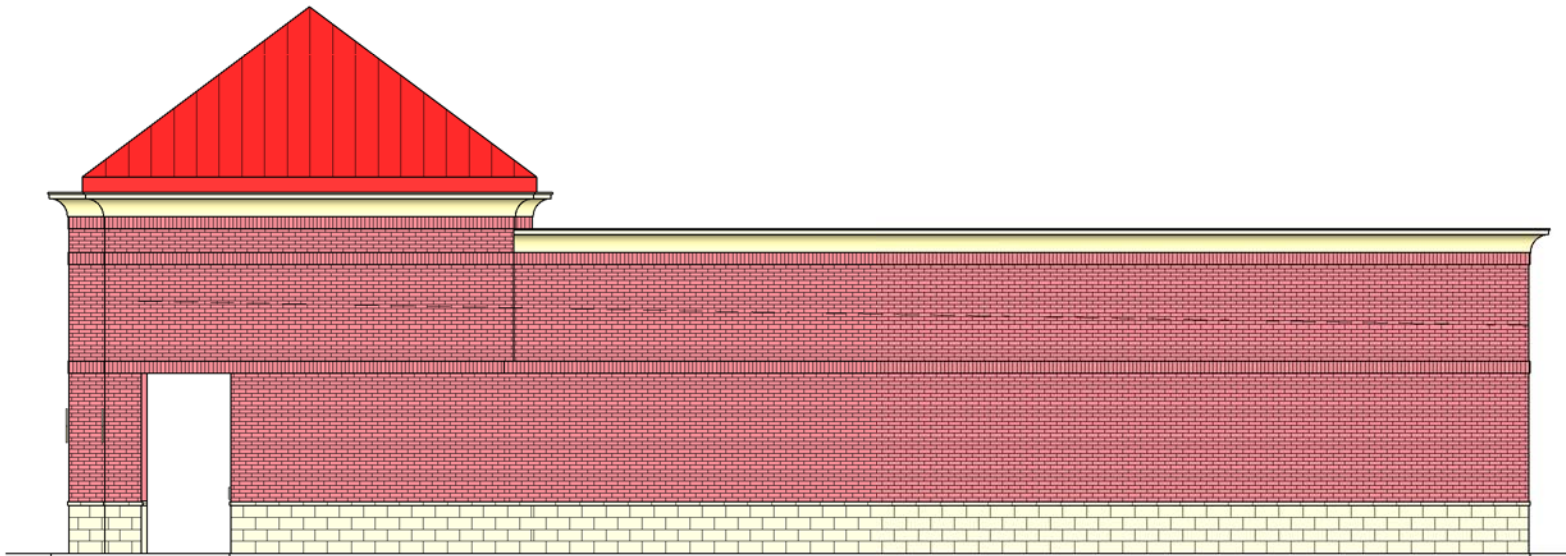


① Front Elevation
3/32" = 1'-0"



② Right Side Elevation
3/32" = 1'-0"



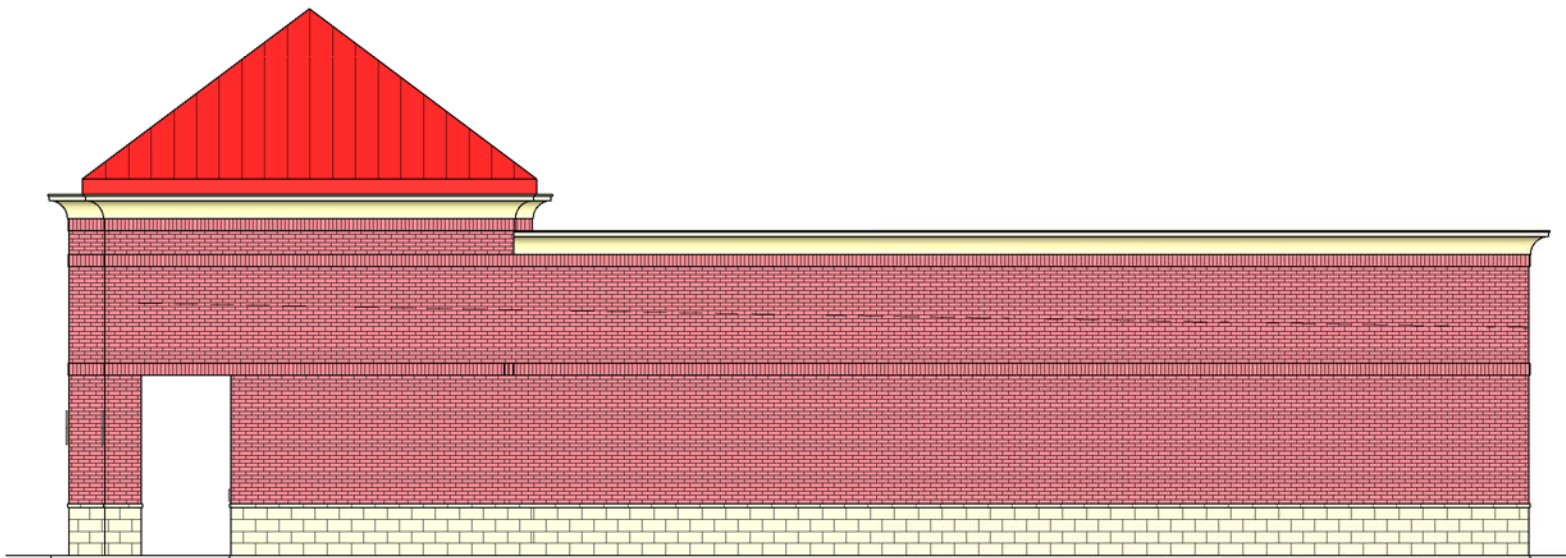
③ 3D View

Retail Center - Proposed Elevation - Option 1 (6 Bays)





① Front Elevation
3/32" = 1'-0"



② Right Side Elevation
3/32" = 1'-0"



③ 3D View

Retail Center - Proposed Elevation - Option 2 (5 Bays)